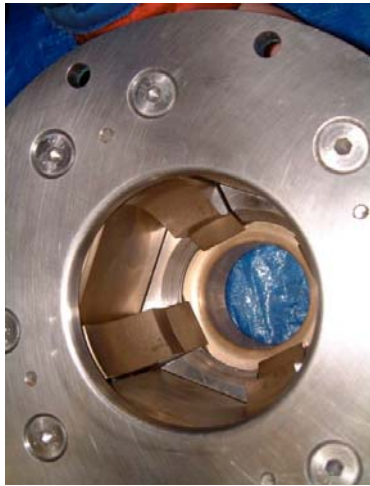


Ball Head Load Latches

Flexible and cost-effective solutions . . .

Developed for Top Hat TMS and underwater load latching



- ◆ Clean open bore - no cable snags
- ◆ Automatically latches from open
- ◆ On load release protection
- ◆ “Zero” over-travel
- ◆ 30 degree “ball joint” connection
- ◆ 750kg / 1500kg / 4500kg Models
- ◆ 3g design load & proof load tested
- ◆ DNV Approved & Certified
- ◆ Integration & Application engineering



MECHANICAL HANDLING UNDER WATER
. . . extend the capabilities of your business
ALL OCEANS ENGINEERING Ltd.